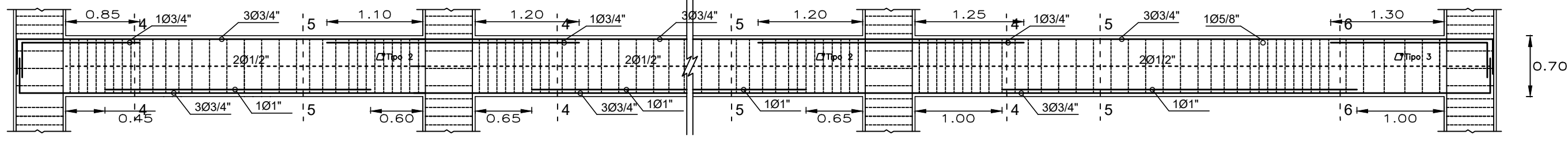
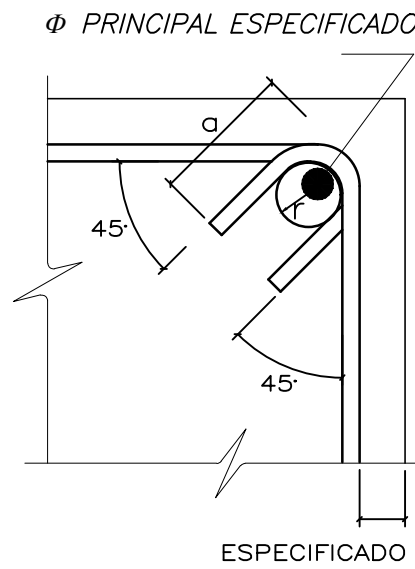


V-203
(Esc: 1/50)



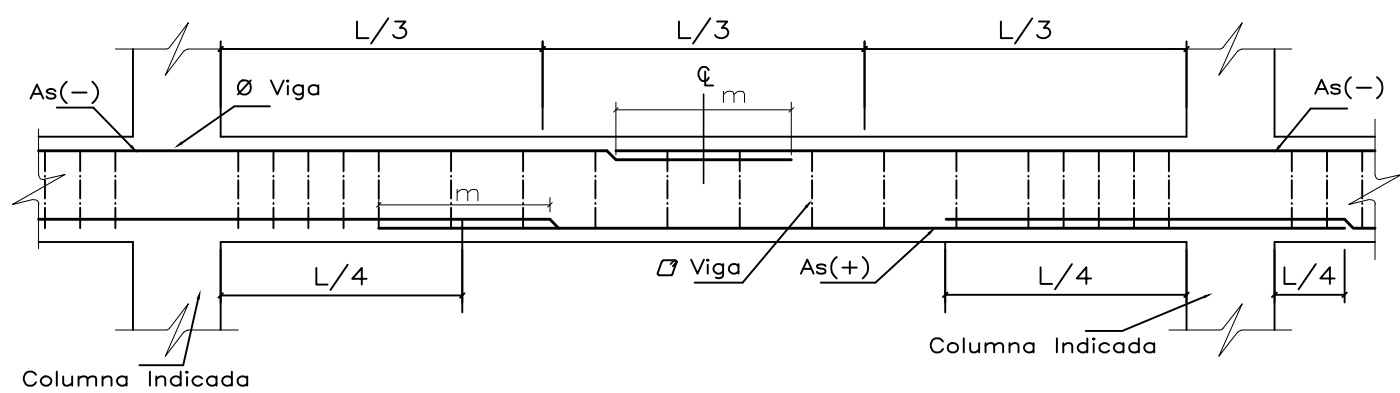
V-103
(Esc: 1/50)



DOBLADO DE ESTRIBOS

Øs	Sup.	Inf.
3/8"	0.45	0.40
1/2"	0.50	0.40
5/8"	0.60	0.50
3/4"	0.75	0.60

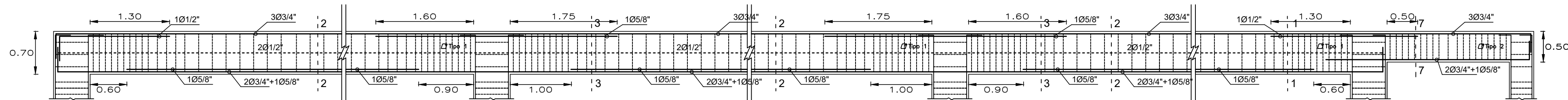
Ø	r	a
8mm	2 cm	10 cm
3/8"	3 cm	15 cm



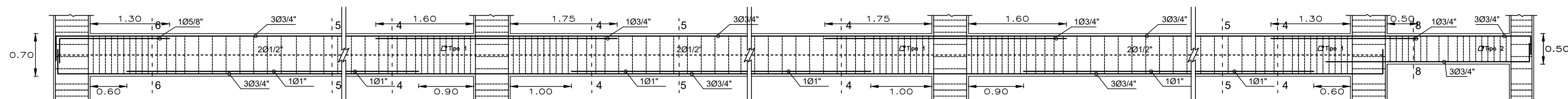
NOTA: ZONAS EN LAS QUE NO SE EFECTUAN TRASLAPES
1.-ARMADURA INFERIOR EN EL TERCIO CENTRAL.
2.-ARMADURA SUPERIOR EN APOYOS CONTINUOS.
3.-ARMADURA SUPERIOR EN VOLADIZOS.
4.-LOS TRASLAPES SERAN INTERCALADOS

TRASLAPE DE ACERO EN VIGAS

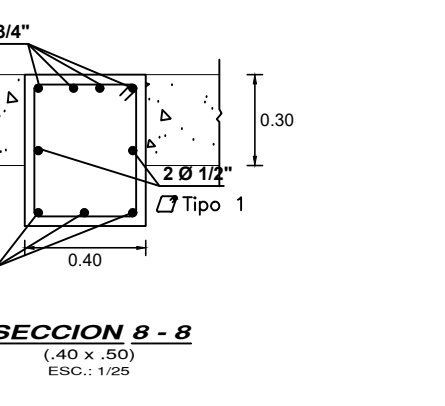
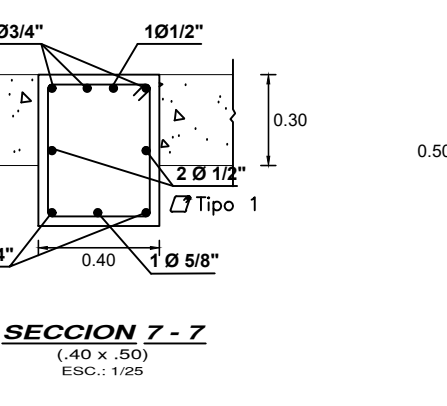
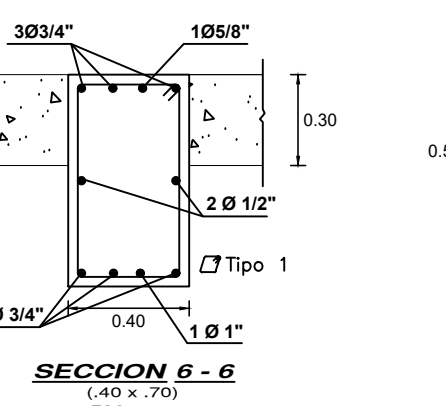
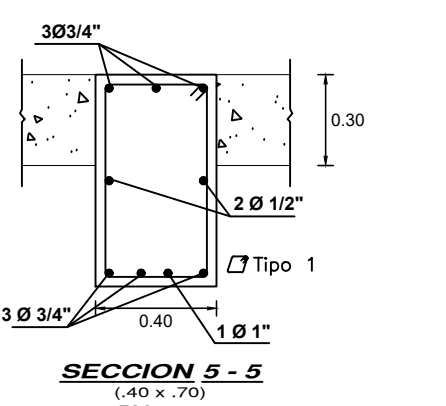
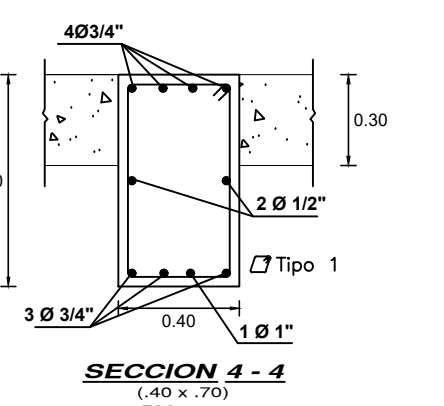
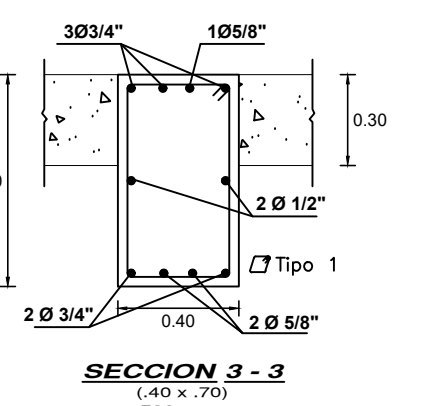
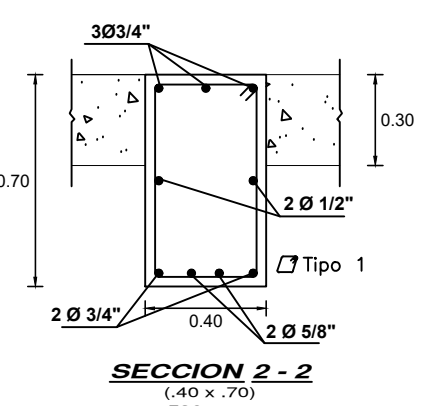
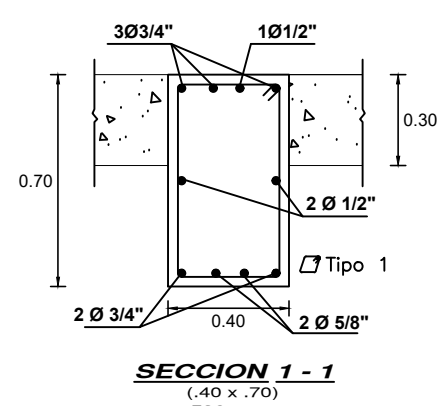
ESC.: 1/50



V-203
(Esc: 1/50)



V-103
(Esc: 1/50)



CUADRO DE ESTRIBOS

TIPO	Ø	ESPACIAMIENTO
1	3/8"	1@.05, 9@.10, 4@.15 rto.@.225 c/ext
2	3/8"	1@.05, 8@.10, 4@.15 rto.@.20 c/ext
3	3/8"	1@.05, rto.@.20 c/ext
4	3/8"	1@.05, 4@.10, rto.@.15 c/ext